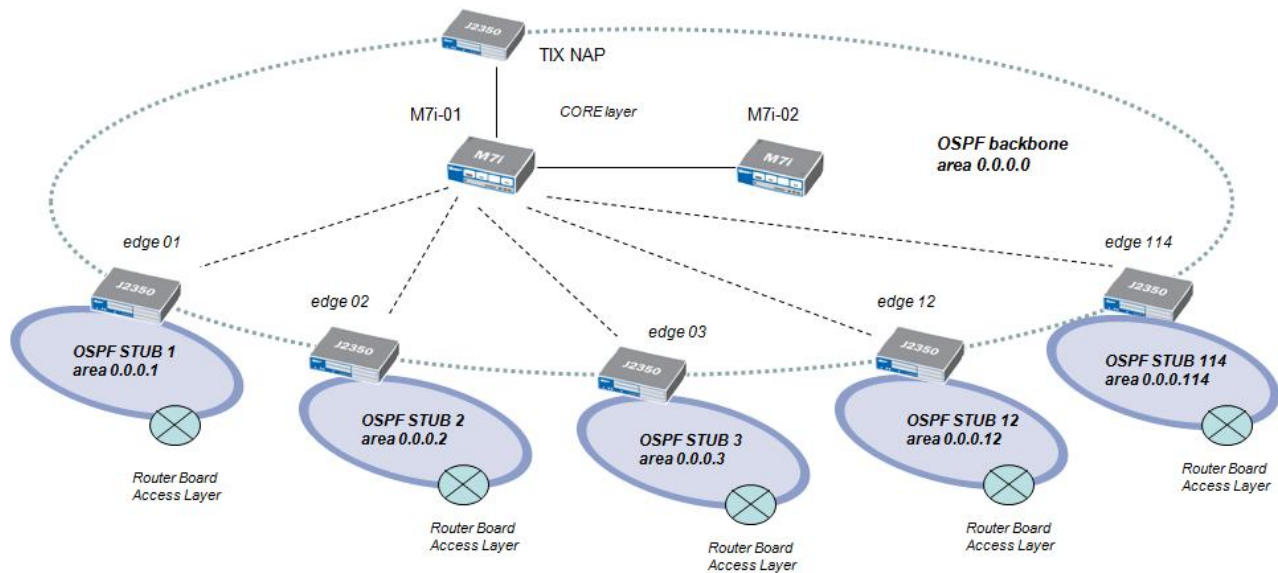


Configurazioni router Juniper per un progetto OSPF STUB AREA:



Il ruolo di ABR (Area Border Router) è dedicato su tutti i router Edge layer; la configurazione di essi prevede pertanto sia un collegamento verso l'area 0.0.0.0 di backbone sia un collegamento verso la rispettiva area STUB

In area 0.0.0.0 di backbone partecipano i seguenti router:

- ✓ CORE: M7i-01 + M7i-02 + TIX
- ✓ EDGE: J2350-01 + J2350-02 + J2350-03 + J2350-12 + J2350-114

Ad ogni router di Edge viene assegnata una rispettiva area STUB:

- J2350-01: OSPF STUB area 0.0.0.1
- J2350-02: OSPF STUB area 0.0.0.2
- J2350-03: OSPF STUB area 0.0.0.3
- J2350-12: OSPF STUB area 0.0.0.12
- J2350-114: OSPF STUB area 0.0.0.114

Router Edge-01	Configurazione
<pre> protocols { ospf { area 0.0.0.0 { interface ge-0/0/0.0; } area 0.0.0.1 { stub default-metric 1 no-summaries; interface ge-0/0/1.0; interface ge-0/0/1.1; interface ge-0/0/1.2; interface ge-0/0/1.3; } } } </pre>	<pre> protocol ospf area 0.0.0.0 Backbone interfaccia con area di backbone ! area 0.0.0.1 (stub area) type STUB default-metric 1: metric for the default route in this stub area no-summaries: don't flood summary LSAs into this stub area interface on area Stub 0.0.0.1 </pre>

Router Edge-02	Configurazione
<pre> protocols { ospf { area 0.0.0.0 { interface ge-0/0/0.0; } area 0.0.0.2 { stub default-metric 1 no-summaries; interface ge-0/0/1.0; interface ge-0/0/1.1; interface ge-0/0/1.2; interface ge-0/0/1.3; interface ge-0/0/1.4; } } } </pre>	<pre> protocol ospf area 0.0.0.0 Backbone interfaccia con area di backbone ! area 0.0.0.2 (stub area) type STUB default-metric 1: metric for the default route in this stub area no-summaries: don't flood summary LSAs into this stub area interface on area Stub 0.0.0.2 </pre>

Router Edge-03	Configurazione
<pre> protocols { ospf { area 0.0.0.0 { interface ge-0/0/0.0; } area 0.0.0.3 { stub default-metric 1 no-summaries; interface ge-0/0/1.0; interface ge-0/0/1.1; interface ge-0/0/1.2; interface ge-0/0/1.3; interface ge-0/0/1.4; interface ge-0/0/1.5; interface ge-0/0/1.6; interface ge-0/0/1.9; interface ge-0/0/1.11; interface ge-0/0/1.16; interface ge-0/0/1.110; } } } </pre>	<pre> protocol ospf area 0.0.0.0 Backbone interfaccia on area di backbone ! area 0.0.0.3 (stub area) type STUB default-metric 1: metric for the default route in this stub area no-summaries: don't flood summary LSAs into this stub area interface on area Stub 0.0.0.3 </pre>

Router Edge-12	Configurazione
<pre> protocols { ospf { area 0.0.0.0 { interface ge-0/0/0.0; } area 0.0.0.12 { stub default-metric 1 no-summaries; interface ge-0/0/1.0; interface ge-0/0/1.1; interface ge-0/0/1.110; } } } </pre>	<pre> protocol ospf area 0.0.0.0 Backbone interfaccia on area di backbone ! area 0.0.0.12 (stub area) type STUB default-metric 1: metric for the default route in this stub area no-summaries: don't flood summary LSAs into this stub area interface on area Stub 0.0.0.12 </pre>

Router Edge-114	Configurazione
<pre> protocols { ospf { area 0.0.0.0 { interface ge-0/0/0.0; } area 0.0.0.114 { stub default-metric 1 no-summaries; interface ge-0/0/1.0; interface ge-0/0/1.1; interface ge-0/0/1.2; } } } </pre>	<pre> protocol ospf area 0.0.0.0 Backbone interfaccia on area di backbone ! area 0.0.0.114 (stub area) type STUB default-metric 1: metric for the default route in this stub area no-summaries: don't flood summary LSAs into this stub area interface on area Stub 0.0.0.114 </pre>

